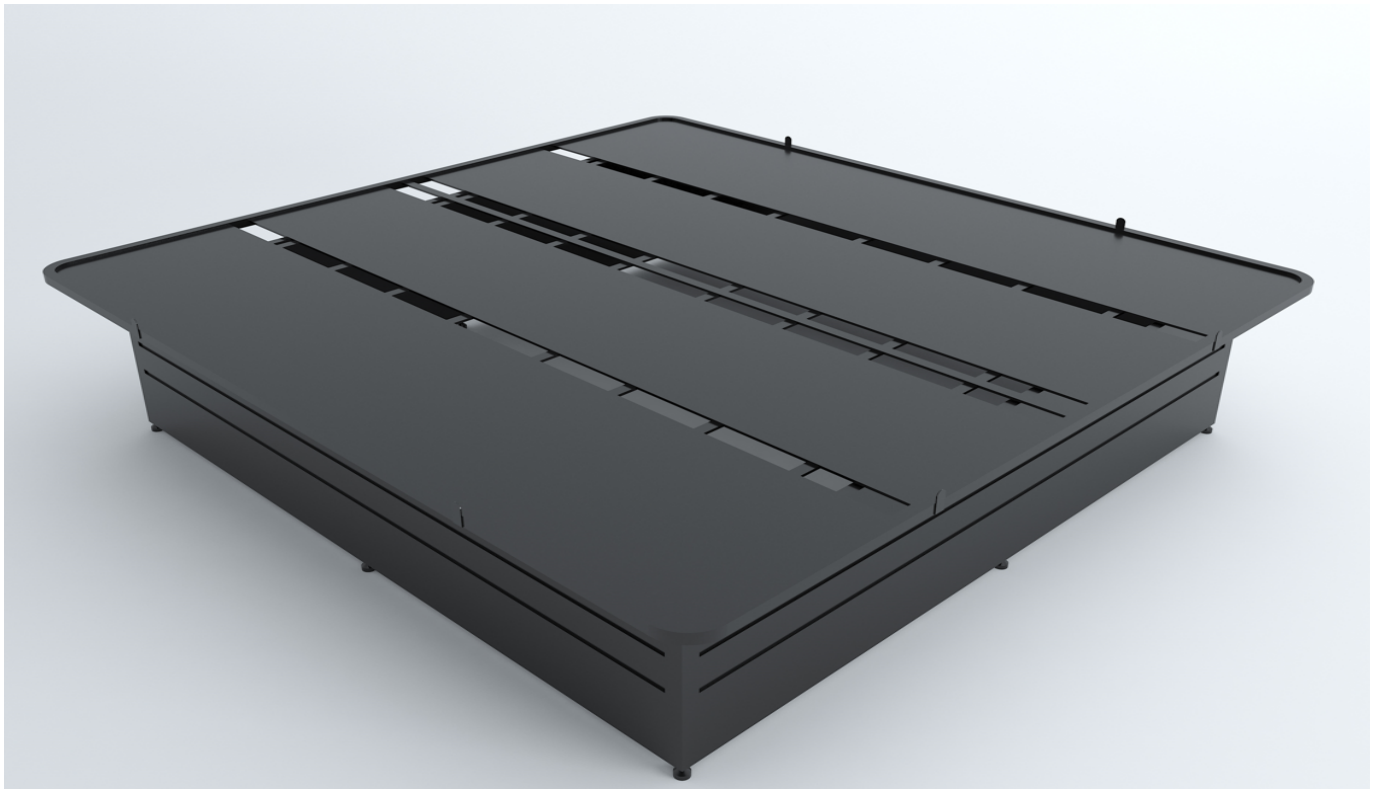


## LEGACY PLATFORM BED BASE 2



### **Features and Benefits:**

#### Unique Slat Design:

Durable, rectangular steel slats provide stationary support which increases the life of your mattress.

#### 4 Side Panels:

Complete closure with 4 side panels helps prevent bed bugs & unwanted access underneath the mattress.

#### All-in-One Combo:

No foundation, box spring, or bed skirt needed.

#### Noise-Free Design:

No creaking or squeaking. Designed to be noise free.

#### 100% Steel Construction:

Heavy-gauge slat/rail support with a durable welded frame.

#### Stylish & Intelligent:

A clean, modern bed frame designed for style and function.

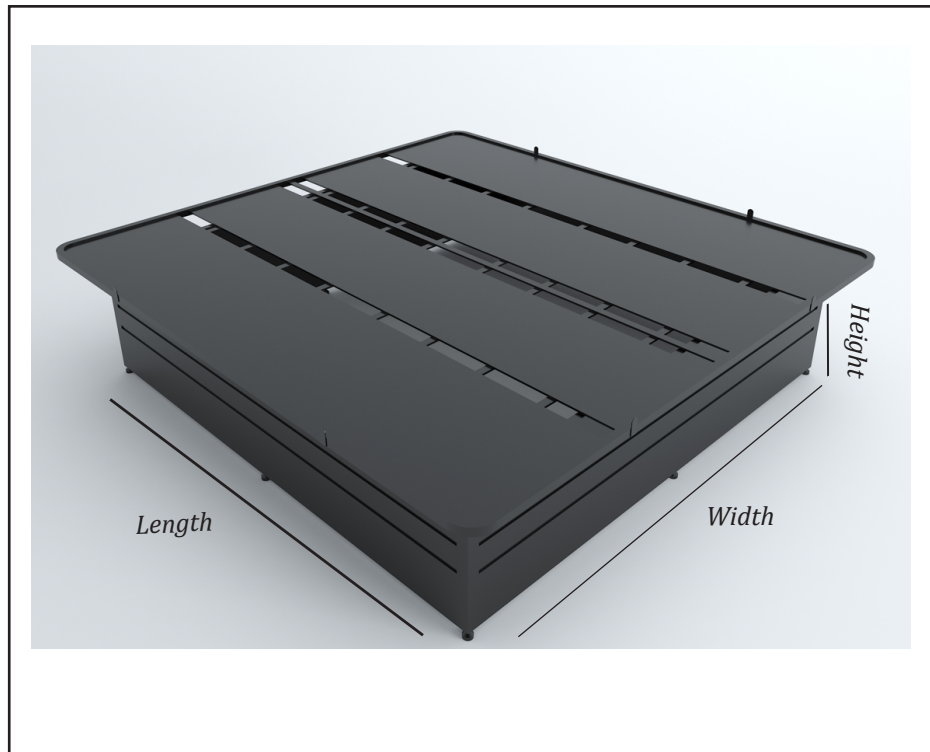
#### Supports up to 2,500 pounds:

Commercial grade, heavy duty platform bed can support up to 2,500lbs.

#### Rounded Corners:

Rounded corners allow for enhanced safety and prevent injury when walking by your bed.

## LEGACY PLATFORM BED BASE 2



Sizes:	TWIN XL	FULL XL	QUEEN	KING	H. KING	Cal. KING
	WIDTH	38.5"	54"	60"	76"	72"
LENGTH	79.5"	79.5"	79.5"	79.5"	79.5"	84"
HEIGHT	18"	18"	18"	18"	18"	18"

Specs:	<b>Color/Finish:</b>	Black
	<b>Frame Material:</b>	Steel
	<b>Weight Capacity:</b>	2,500 lbs
	<b>Height:</b>	18"
	<b>Available in:</b>	Twin XL, Full XL, Queen, King, Hotel King & California King
<b>Other Specs:</b>	Rigid slat design. Much better support compared to wire mesh.	
	- 4 Side Panels	
	- Steel Legs with Rubber Tips	
	- Rounded Corners for enhanced safety	